

Installation Procedure : Eco Bella-Smooth™

*IMPORTANT GUIDELINES FOR INSTALLATION—STOP & READ BEFORE INSTALLING

Install According To Instructions Only:

Murals Your Way shall provide a complete copy of our current installation instructions to the customer. All installations must conform to the Murals Your Way current installation instructions in order for the Murals Your Way Love It Guarantee™ to apply. **If the wall covering is installed in a manner other than that recommended by Murals Your Way, it is done at the sole risk of the installer and the Murals Your Way Love It Guarantee™ protections do not apply.** Use of a mold inhibiting primer product and the use of an adhesive containing a mildew inhibitor is recommended prior to the installation of Eco Bella-Smooth™.

Check Shipment for Accuracy:

All labels shall be checked for accuracy by the installer to ensure that the shipment is received as ordered. If any discrepancy is found, Murals Your Way should be contacted immediately.

Check Product for Defects:

Upon receiving your mural, promptly check for product defects. If no defect is evident before installation, proceed with the installation. After each panel is installed, the material should be inspected. If any defect is evident at this time (or at any point of the installation) no further material should be applied and Murals Your Way should be contacted immediately. Install your mural within 24 hours of removing and unrolling from packaging (or roll up and place back in original packaging until ready to install). Failure to do so may cause the wall covering to curl. If there are any questions on the following instructions, contact Murals Your Way before proceeding.

Wall Preparation

Clean Surfaces: All hanging surfaces must be clean, smooth, dry, undamaged, free of mold, mildew, grease or stains as well as structurally sound. Loose paint or other wall coverings must be removed to ensure good adhesion. In order to ensure maximum smoothness of installation, nail heads, nicks, gouges, and other surface imperfections should be filled, sanded smooth and sealed. On new walls, drywall joints should be taped, mudded and sanded smooth.

Moisture: Our murals are intended for use in buildings that are properly designed and maintained to avoid moisture infiltration, condensation and/or accumulation at wall cavities and wall surfaces, particularly in warm, humid climates. If you are unsure if moisture problems are present, consult a qualified professional before proceeding.

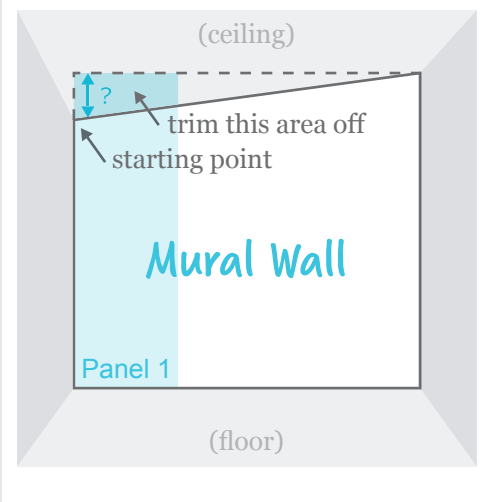
Wall Paint: Proper surface preparation is key to getting great results. Glossy surfaces should be sanded to dull the surface, and dust removed with a dry cloth or an application of professional heavy-duty primer (with mold and mildew inhibitors) should be applied 72 hours prior to installation. For a list of suggested primers, please contact Murals Your Way.

Measure Carefully: For a successful hanging job, it is essential that your wall covering be hung straight. Mark straight horizontal and vertical lines on your wall to line up the first panel. If the mural is smaller than the total wall space, mark out the dimensions lightly in pencil on the wall using a level and tape measure to create a straight center line and make sure that the area is level. Use only a lead pencil for marking walls. Do not use ballpoint or marking pen, they will bleed through the surface.

Temperature: Do not install wall covering unless a temperature above 65° degrees F is maintained in both areas of installation and storage for at least 48 hours prior to installation.

Out-of-Plumb Walls:

Measure the difference in height between your starting point and the highest point on your wall. Compensate for the difference by leaving that amount of extra material at the top of the first panel (which you will trim off at the end). If the width of your walls is out of plumb, compensate similarly.



Preview Panels: Arrange the panels of the mural in front of the wall where they will be installed in the proper order. All murals more than (1) panel will be numbered, in order, on the bottom left corner. This marking is small and faint so that if not trimmed after installing, it will not be readily apparent.

Selecting An Adhesive:

Eco Bella-Smooth™ wall covering should be installed with a heavy duty adhesive. Manufacturers such as Roman Decorating and Zinsser offer permeable adhesives. Please contact your Murals Your Way for a list of suggested adhesives.

Adhesive Application:

Do not dilute adhesive. Apply an even coat of adhesive to the entire backside (fabric side) of material using a bristle brush or roller. We do not recommend using a pasting machine. Work the adhesive in to cover the back completely, especially near the edges. Fold each end toward the middle, pasted sides together, aligning the edges carefully so they do not dry out. Allow to “relax” for ten minutes (booking). This will allow the adhesive to penetrate the wall covering, ensure a firm bond as well as prevent your seams from separating, which is important to a successful installation. Do not crease booked material.

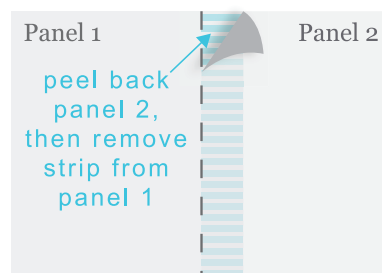
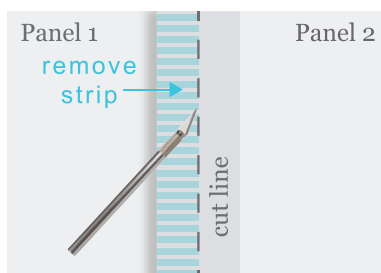
Hanging Guidelines

It's time to start hanging your wall covering.

1. Install “Panel #1” by carrying your booked panel to your wall. Unfold the top portion of your panel, pressing the upper portion against the wall, ensuring that it is straight with your plumb line.
2. Give the top portion of the panel a couple of strokes at the ceiling line to force it flat against the wall.
3. Leave up to one inch overage for trimming along the ceiling line.
4. Line up the edge of your wall covering to your vertical plumb line.
5. Slide the middle portion of the panel into position using the palm of your hands.
Avoid pulling on the edges of any wall covering.
6. Check for alignment against the vertical plumb line, and smooth with downward strokes.
7. Unfold the remainder of the panel and smooth down the bottom portion making sure the panel is aligned with the vertical plumb line and the image matches correctly. When the panel is positioned correctly, sweep your smoothing tool across the panel from the center outwards, working out all air bubbles.

PLEASE NOTE: Every mural is printed with a two inch overlap. Do not butt panels.

8. Overlap the second panel over the first panel by approximately two inches, matching up the image. Apply any additional panels in the same method. Carefully smooth out all bubbles as you go. Caution: remove excess paste immediately with clean warm water and a moist natural sponge; do not use man made (i.e. polyester) sponges. Dry with a clean cloth. If excess paste is not removed permanent damage could result to the face of the material.
9. Murals are printed with a two inch overlap intended to be double cut. Place your straight edge vertically in the center of the overlap and cut through both layers of material using a sharp razor blade. Make long cuts, without lifting the blade. (Use of an X-Acto knife with a fresh blade is recommended). Peel away both pieces of excess material after completing the cut. Clean off any paste residue with clean warm water and a moist natural sponge. Dry with a clean cloth.



10. Trim at the ceiling and baseboard with a sharp razor blade and a straightedge as a guide. If the mural is larger than the width of the wall, cut along the corners or edges of the wall. Make long cuts, without lifting the blade. Step back and enjoy!